



PORTO MONTENEGRO

REGENT POOL CLUB RESIDENCES

FLOORPLANS / AUGUST 2015

REGENT POOL CLUB RESIDENCES / PORTO MONTENEGRO / ARCHITECTURAL RENDERING



Computer-generated image of residences at completion. Preliminary design concepts only. All prices, plans, square metres, dimensions, specifications and features are preliminary and subject to change without notice.



REGENT POOL CLUB RESIDENCES / PORTO MONTENEGRO / First Floor



RESIDENCE 1.01 / 2B	
INTERNAL AREA	113 SQM
EXTERNAL AREA	65 SQM
TOTAL	178 SQM

RESIDENCE 1.02 / 2B	
INTERNAL AREA	113 SQM
EXTERNAL AREA	26 SQM
TOTAL	139 SQM

RESIDENCE 1.03 / 2B	
INTERNAL AREA	114 SQM
EXTERNAL AREA	64 SQM
TOTAL	178 SQM

RESIDENCE 1.04 / 1B	
INTERNAL AREA	60 SQM
EXTERNAL AREA	13 SQM
TOTAL	73 SQM

RESIDENCE 1.05 / 1B	
INTERNAL AREA	63 SQM
EXTERNAL AREA	18 SQM
TOTAL	81 SQM

RESIDENCE 1.06 / 1B	
INTERNAL AREA	63 SQM
EXTERNAL AREA	18 SQM
TOTAL	81 SQM

RESIDENCE 1.07 / 3B	
INTERNAL AREA	180 SQM
EXTERNAL AREA	83 SQM
TOTAL	263 SQM

RESIDENCE 1.08 / 2B	
INTERNAL AREA	113 SQM
EXTERNAL AREA	18 SQM
TOTAL	131 SQM

RESIDENCE 1.09 / 2B	
INTERNAL AREA	118 SQM
EXTERNAL AREA	58 SQM
TOTAL	176 SQM

RESIDENCE 1.10 / 1B	
INTERNAL AREA	64 SQM
EXTERNAL AREA	21 SQM
TOTAL	85 SQM

RESIDENCE 1.11 / 1B	
INTERNAL AREA	64 SQM
EXTERNAL AREA	22 SQM
TOTAL	86 SQM

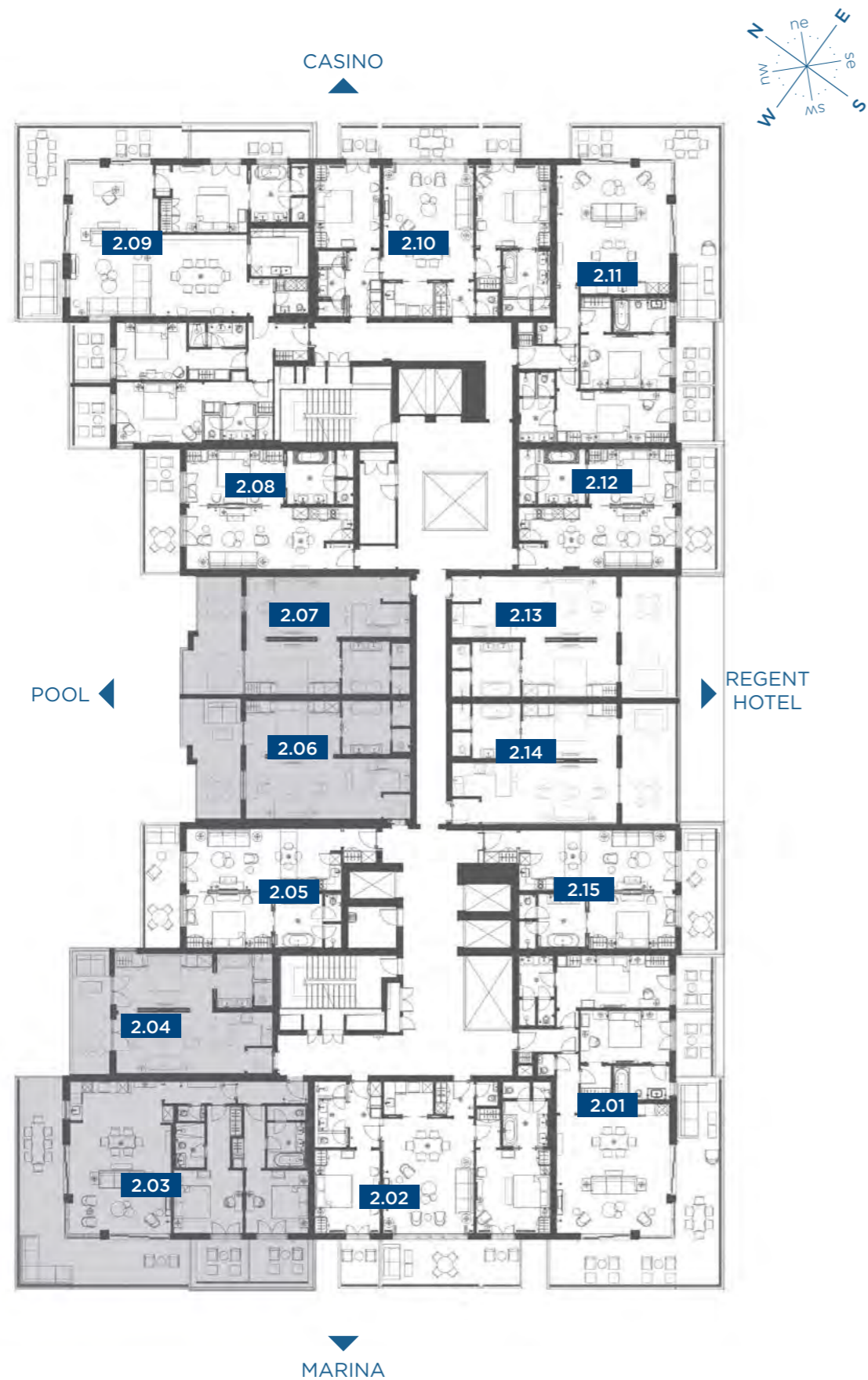
RESIDENCE 1.12 / 1B	
INTERNAL AREA	63 SQM
EXTERNAL AREA	15 SQM
TOTAL	78 SQM

*Please note all areas are currently excluding structural elements and technical areas

Preliminary design concepts only. All prices are exclusive of parking which is available at an additional price of 25,000 euros per space. All prices, plans, square metres, dimensions, specifications and features are preliminary and subject to change without notice.



REGENT POOL CLUB RESIDENCES / PORTO MONTENEGRO / Second Floor



RESIDENCE 2.01 / 2B	
INTERNAL AREA	112 SQM
EXTERNAL AREA	64 SQM
TOTAL	176 SQM

RESIDENCE 2.02 / 2B	
INTERNAL AREA	113 SQM
EXTERNAL AREA	27 SQM
TOTAL	140 SQM

RESIDENCE 2.03 / 2B	
INTERNAL AREA	114 SQM
EXTERNAL AREA	67 SQM
TOTAL	181 SQM

RESIDENCE 2.04 / 1B	
INTERNAL AREA	60 SQM
EXTERNAL AREA	14 SQM
TOTAL	74 SQM

RESIDENCE 2.05 / 1B	
INTERNAL AREA	63 SQM
EXTERNAL AREA	14 SQM
TOTAL	77 SQM

RESIDENCE 2.06 / 1B	
INTERNAL AREA	63 SQM
EXTERNAL AREA	19 SQM
TOTAL	82 SQM

RESIDENCE 2.07 / 1B	
INTERNAL AREA	63 SQM
EXTERNAL AREA	19 SQM
TOTAL	82 SQM

RESIDENCE 2.08 / 1B	
INTERNAL AREA	63 SQM
EXTERNAL AREA	15 SQM
TOTAL	78 SQM

RESIDENCE 2.09 / 3B	
INTERNAL AREA	180 SQM
EXTERNAL AREA	70 SQM
TOTAL	250 SQM

RESIDENCE 2.10 / 2B	
INTERNAL AREA	112 SQM
EXTERNAL AREA	20 SQM
TOTAL	132 SQM

RESIDENCE 2.11 / 2B	
INTERNAL AREA	113 SQM
EXTERNAL AREA	54 SQM
TOTAL	167 SQM

RESIDENCE 2.12 / 1B	
INTERNAL AREA	59 SQM
EXTERNAL AREA	16 SQM
TOTAL	75 SQM

RESIDENCE 2.13 / 1B	
INTERNAL AREA	64 SQM
EXTERNAL AREA	21 SQM
TOTAL	85 SQM

RESIDENCE 2.14 / 1B	
INTERNAL AREA	64 SQM
EXTERNAL AREA	21 SQM
TOTAL	85 SQM

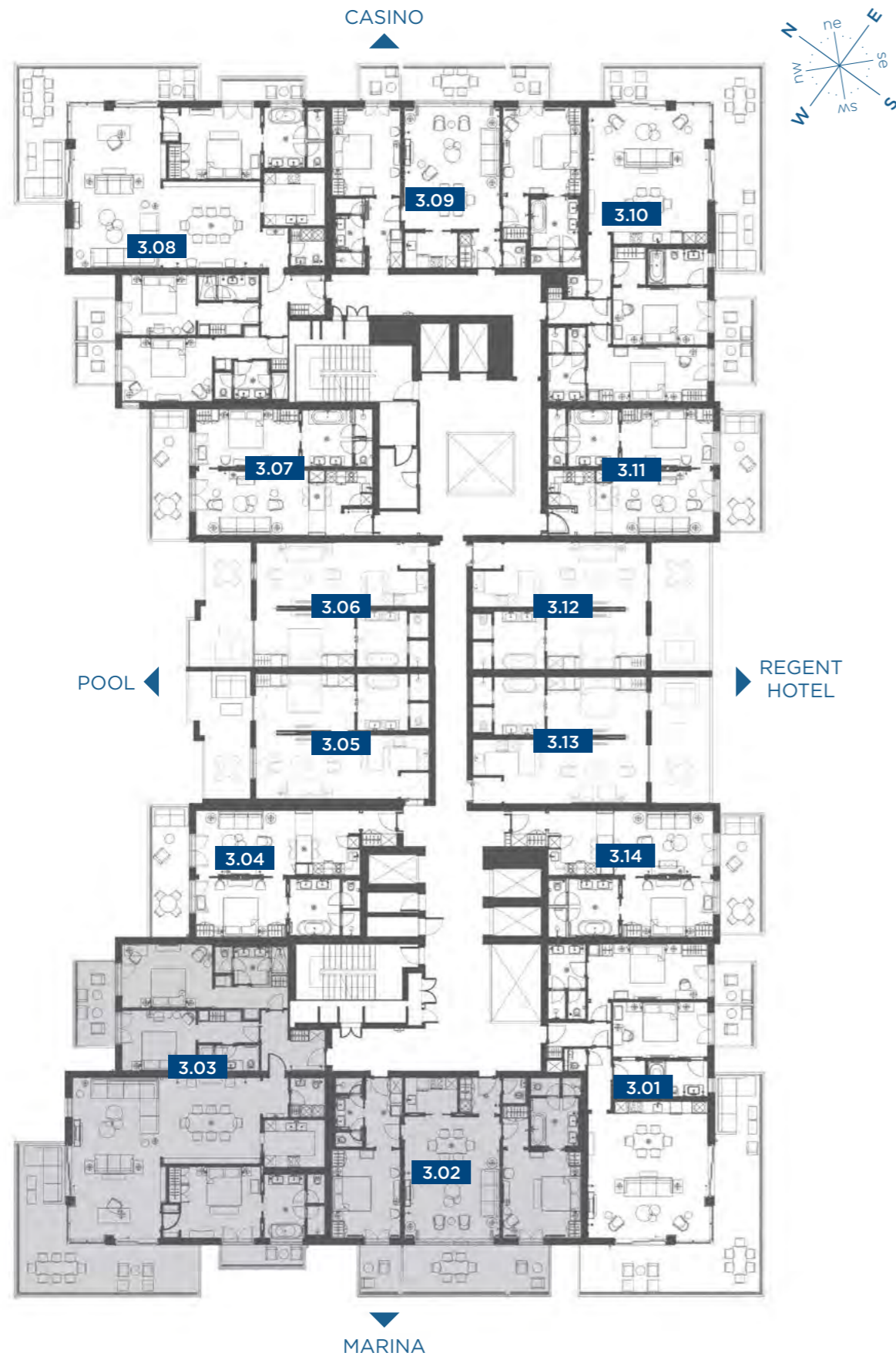
RESIDENCE 2.15 / 1B	
INTERNAL AREA	63 SQM
EXTERNAL AREA	16 SQM
TOTAL	79 SQM

*Please note all areas are currently excluding structural elements and technical areas

Preliminary design concepts only. All prices are exclusive of parking which is available at an additional price of 25,000 euros per space. All prices, plans, square metres, dimensions, specifications and features are preliminary and subject to change without notice.



REGENT POOL CLUB RESIDENCES / PORTO MONTENEGRO / Third Floor



RESIDENCE 3.01 / 2B	
INTERNAL AREA	112 SQM
EXTERNAL AREA	60 SQM
TOTAL	172 SQM

RESIDENCE 3.02 / 2B	
INTERNAL AREA	112 SQM
EXTERNAL AREA	27 SQM
TOTAL	139 SQM

RESIDENCE 3.03 / 3B	
INTERNAL AREA	180 SQM
EXTERNAL AREA	56 SQM
TOTAL	236 SQM

RESIDENCE 3.04 / 1B	
INTERNAL AREA	63 SQM
EXTERNAL AREA	14 SQM
TOTAL	77 SQM

RESIDENCE 3.05 / 1B	
INTERNAL AREA	63 SQM
EXTERNAL AREA	20 SQM
TOTAL	83 SQM

RESIDENCE 3.06 / 1B	
INTERNAL AREA	63 SQM
EXTERNAL AREA	20 SQM
TOTAL	83 SQM

RESIDENCE 3.07 / 1B	
INTERNAL AREA	63 SQM
EXTERNAL AREA	15 SQM
TOTAL	78 SQM

RESIDENCE 3.08 / 3B	
INTERNAL AREA	180 SQM
EXTERNAL AREA	48 SQM
TOTAL	228 SQM

RESIDENCE 3.09 / 2B	
INTERNAL AREA	112 SQM
EXTERNAL AREA	20 SQM
TOTAL	132 SQM

RESIDENCE 3.10 / 2B	
INTERNAL AREA	113 SQM
EXTERNAL AREA	50 SQM
TOTAL	163 SQM

RESIDENCE 3.11 / 1B	
INTERNAL AREA	60 SQM
EXTERNAL AREA	14 SQM
TOTAL	74 SQM

RESIDENCE 3.12 / 1B	
INTERNAL AREA	64 SQM
EXTERNAL AREA	19 SQM
TOTAL	83 SQM

RESIDENCE 3.13 / 1B	
INTERNAL AREA	64 SQM
EXTERNAL AREA	19 SQM
TOTAL	83 SQM

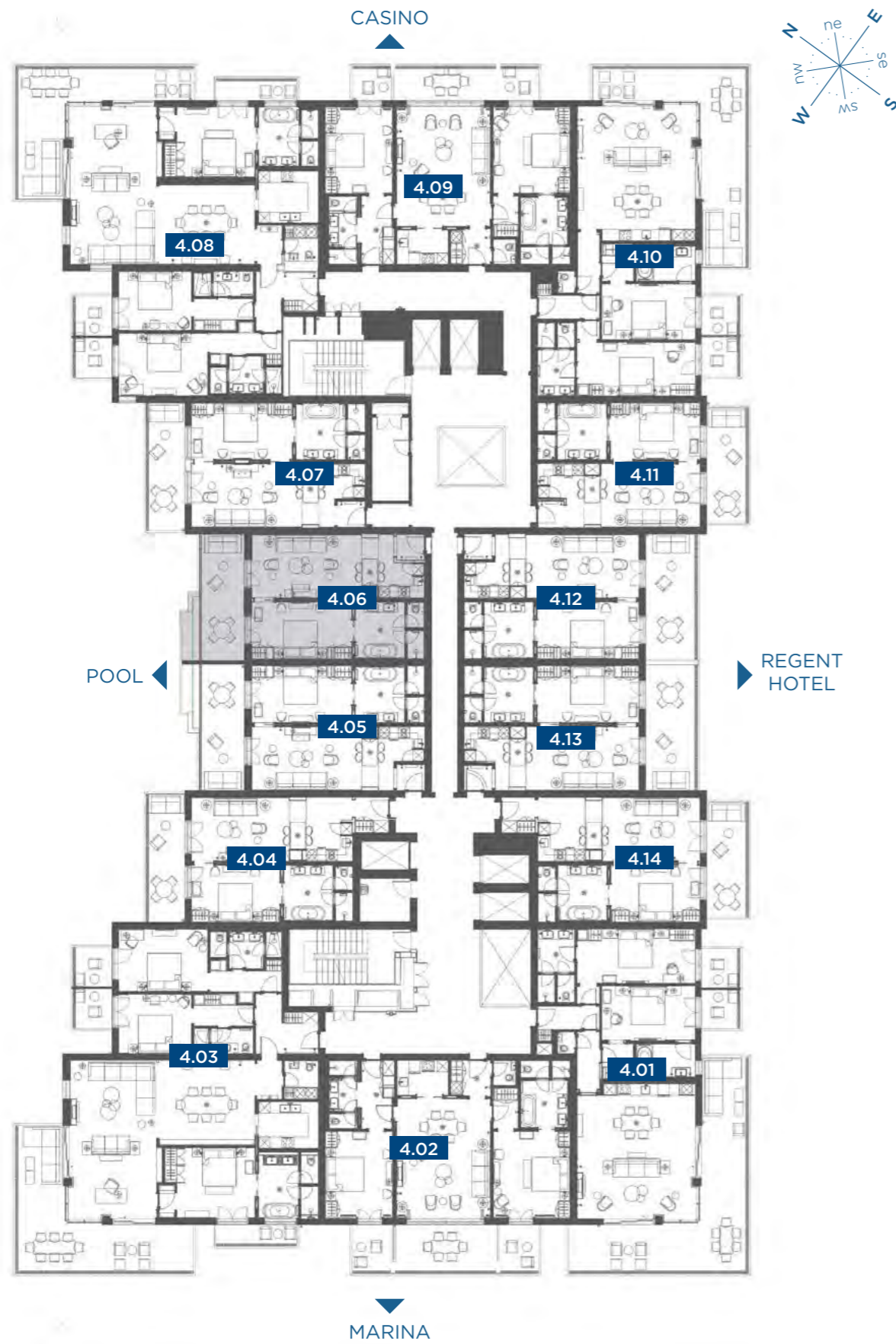
RESIDENCE 3.14 / 1B	
INTERNAL AREA	64 SQM
EXTERNAL AREA	14 SQM
TOTAL	78 SQM

*Please note all areas are currently excluding structural elements and technical areas

Preliminary design concepts only. All prices are exclusive of parking which is available at an additional price of 25,000 euros per space. All prices, plans, square metres, dimensions, specifications and features are preliminary and subject to change without notice.



REGENT POOL CLUB RESIDENCES / PORTO MONTENEGRO / Fourth Floor



RESIDENCE 4.01 / 2B

INTERNAL AREA	112 SQM
EXTERNAL AREA	60 SQM
TOTAL	172 SQM

RESIDENCE 4.02 / 2B

INTERNAL AREA	112 SQM
EXTERNAL AREA	27 SQM
TOTAL	139 SQM

RESIDENCE 4.03 / 3B

INTERNAL AREA	180 SQM
EXTERNAL AREA	56 SQM
TOTAL	236 SQM

RESIDENCE 4.04 / 1B

INTERNAL AREA	63 SQM
EXTERNAL AREA	14 SQM
TOTAL	77 SQM

RESIDENCE 4.05 / 1B

INTERNAL AREA	63 SQM
EXTERNAL AREA	20 SQM
TOTAL	83 SQM

RESIDENCE 4.06 / 1B

INTERNAL AREA	63 SQM
EXTERNAL AREA	20 SQM
TOTAL	83 SQM

RESIDENCE 4.07 / 1B

INTERNAL AREA	63 SQM
EXTERNAL AREA	15 SQM
TOTAL	78 SQM

RESIDENCE 4.08 / 3B

INTERNAL AREA	179 SQM
EXTERNAL AREA	49 SQM
TOTAL	228 SQM

RESIDENCE 4.09 / 2B

INTERNAL AREA	112 SQM
EXTERNAL AREA	20 SQM
TOTAL	132 SQM

RESIDENCE 4.10 / 2B

INTERNAL AREA	112 SQM
EXTERNAL AREA	50 SQM
TOTAL	162 SQM

RESIDENCE 4.11 / 1B

INTERNAL AREA	59 SQM
EXTERNAL AREA	15 SQM
TOTAL	74 SQM

RESIDENCE 4.12 / 1B

INTERNAL AREA	64 SQM
EXTERNAL AREA	19 SQM
TOTAL	83 SQM

RESIDENCE 4.13 / 1B

INTERNAL AREA	64 SQM
EXTERNAL AREA	19 SQM
TOTAL	83 SQM

RESIDENCE 4.14 / 1B

INTERNAL AREA	64 SQM
EXTERNAL AREA	14 SQM
TOTAL	78 SQM

*Please note all areas are currently excluding structural elements and technical areas

Preliminary design concepts only. All prices are exclusive of parking which is available at an additional price of 25,000 euros per space. All prices, plans, square metres, dimensions, specifications and features are preliminary and subject to change without notice.



REGENT POOL CLUB RESIDENCES / PORTO MONTENEGRO / Fifth Floor



RESIDENCE 5.01 / 3B	
INTERNAL AREA	240 SQM
EXTERNAL AREA	103 SQM
TOTAL	343 SQM

RESIDENCE 5.02 / 2B	
INTERNAL AREA	190 SQM
EXTERNAL AREA	68 SQM
TOTAL	258 SQM

RESIDENCE 5.03 / 2B	
INTERNAL AREA	123 SQM
EXTERNAL AREA	37 SQM
TOTAL	160 SQM

RESIDENCE 5.04 / 3B	
INTERNAL AREA	206 SQM
EXTERNAL AREA	53 SQM
TOTAL	259 SQM

RESIDENCE 5.05 / 2B	
INTERNAL AREA	115 SQM
EXTERNAL AREA	53 SQM
TOTAL	168 SQM

RESIDENCE 5.06 / 2B	
INTERNAL AREA	96 SQM
EXTERNAL AREA	19 SQM
TOTAL	115 SQM

RESIDENCE 5.07 / 2B	
INTERNAL AREA	125 SQM
EXTERNAL AREA	30 SQM
TOTAL	155 SQM

*Please note all areas are currently excluding structural elements and technical areas

Preliminary design concepts only. All prices are exclusive of parking which is available at an additional price of 25,000 euros per space. All prices, plans, square metres, dimensions, specifications and features are preliminary and subject to change without notice.

